

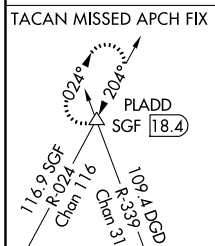
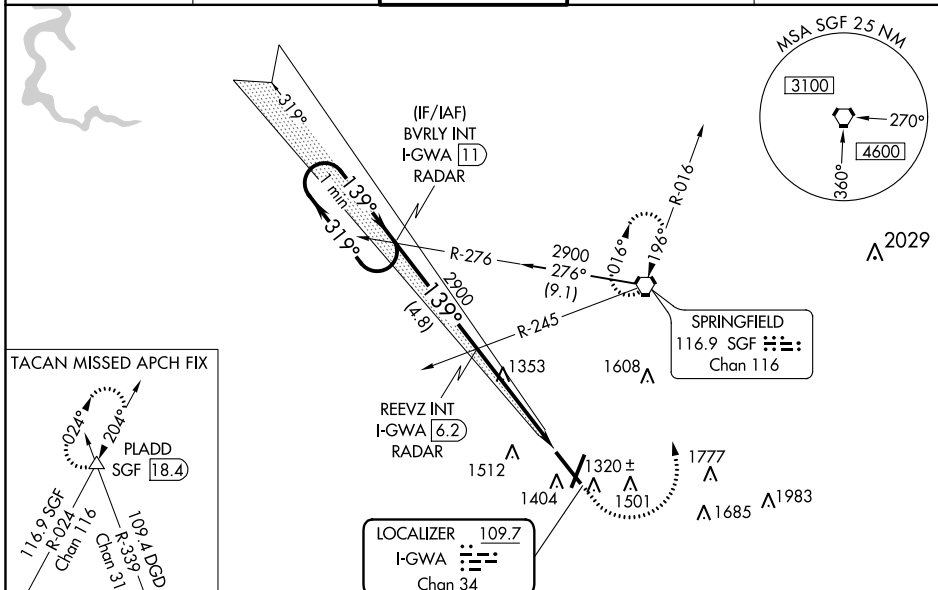
LOC/DME I-GWA 109.7 Chan 34	APP CRS 139°	Rwy Idg TDZE Apt Elev	8000 1260 1268
---	------------------------	-----------------------------	---

ILS or LOC RWY 14

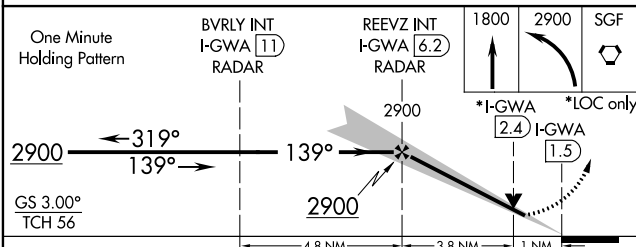
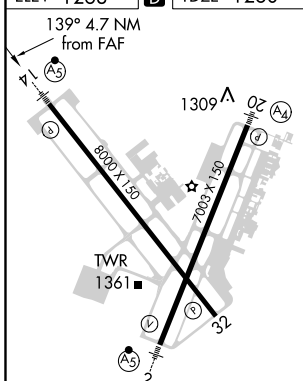
SPRINGFIELD-BRANSON NATIONAL (SGF)

	MALS/R 	MISSED APPROACH: Climb to 1800 then climbing left turn to 2900 to SGF VORTAC and hold. (TACAN aircraft continue on SGF VORTAC R-024 to PLADD INT and hold NE, RT, 204° inbound).
	ATIS 135.125 SPRINGFIELD APP CON 121.1 290.5 SPRINGFIELD TOWER 119.9 257.8 GND CON 121.9 251.15 CLNC DEL 123.675	

ATIS 135.125	SPRINGFIELD APP CON 121.1 290.5	SPRINGFIELD TOWER 119.9 257.8	GND CON 121.9 251.15	CLNC DEL 123.675
------------------------	---	---	--------------------------------	----------------------------



ELEV 1268	D	TDZE 1260
-----------	---	-----------



REIL Rwy 32 HIRL Rws 2-20 and 14-32	FAF to MAP 4.7 NM				
Knots	60	90	120	150	180
Min:Sec	4:42	3:08	2:21	1:53	1:34
C CIRCLING	1760-1 492 (500-1)	1820-1 552 (600-1)	1820-1½ 552 (600-1½)	1920-2 652 (700-2)	

NC-3, 27 APR 2017 to 25 MAY 2017

NC-3, 27 APR 2017 to 25 MAY 2017